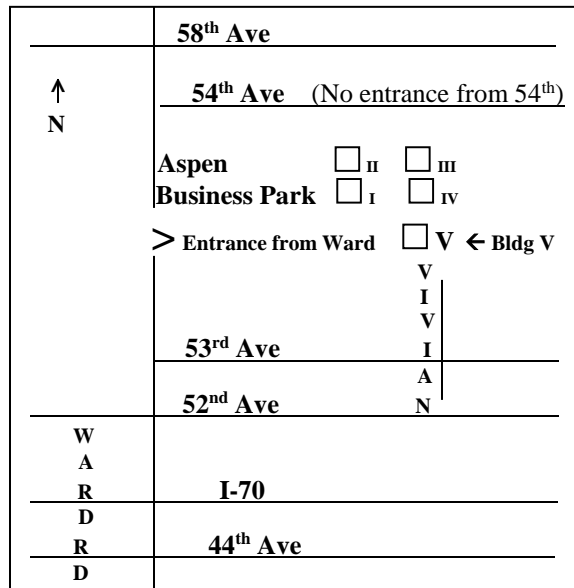


**DON'T LET
GOOGLE
MAPS
FOOL YOU!**

Directions to Our Office

**Aspen Business Park
5400 Ward Road
Building V-170
Arvada, CO 80002
303-420-2863**

Please enter from the front (west side) as the (east side) back door is locked.



From I-70 WESTBOUND

Take the Ward Road/44th Exit.

Turn right onto Ward Road and travel northbound about 7 block to 52nd Ave.

Turn right on 52nd (there is a stop light) and travel east 1 Block to Vivian Street.

Turn left on Vivian and travel northbound 1 ½ blocks where Vivian dead ends.

Veering slightly to the left, the dead end leads to the parking lot of the Aspen Business park office complex.

From I-70 EASTBOUND

Take the Ward Road/44th Exit which leads to 44th Avenue.

Turn right on 44th and stay in the far-right lane to take the immediate right onto Ward Road.

Travel northbound about 8 blocks to 52nd Avenue.

Turn right on 52nd (there is a stop light) and travel east 1 Block to Vivian Street.

Turn left on Vivian and travel northbound 1 ½ blocks where Vivian dead ends.

Veering slightly to the left, the dead end leads to the parking lot of the Aspen Business park office complex.

From BOULDER

Take Highway 93 (Broadway) south to Highway 72 east to Indiana.

Veer right (southbound) on Indiana to 64th Avenue.

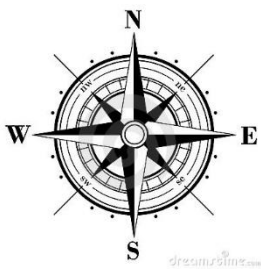
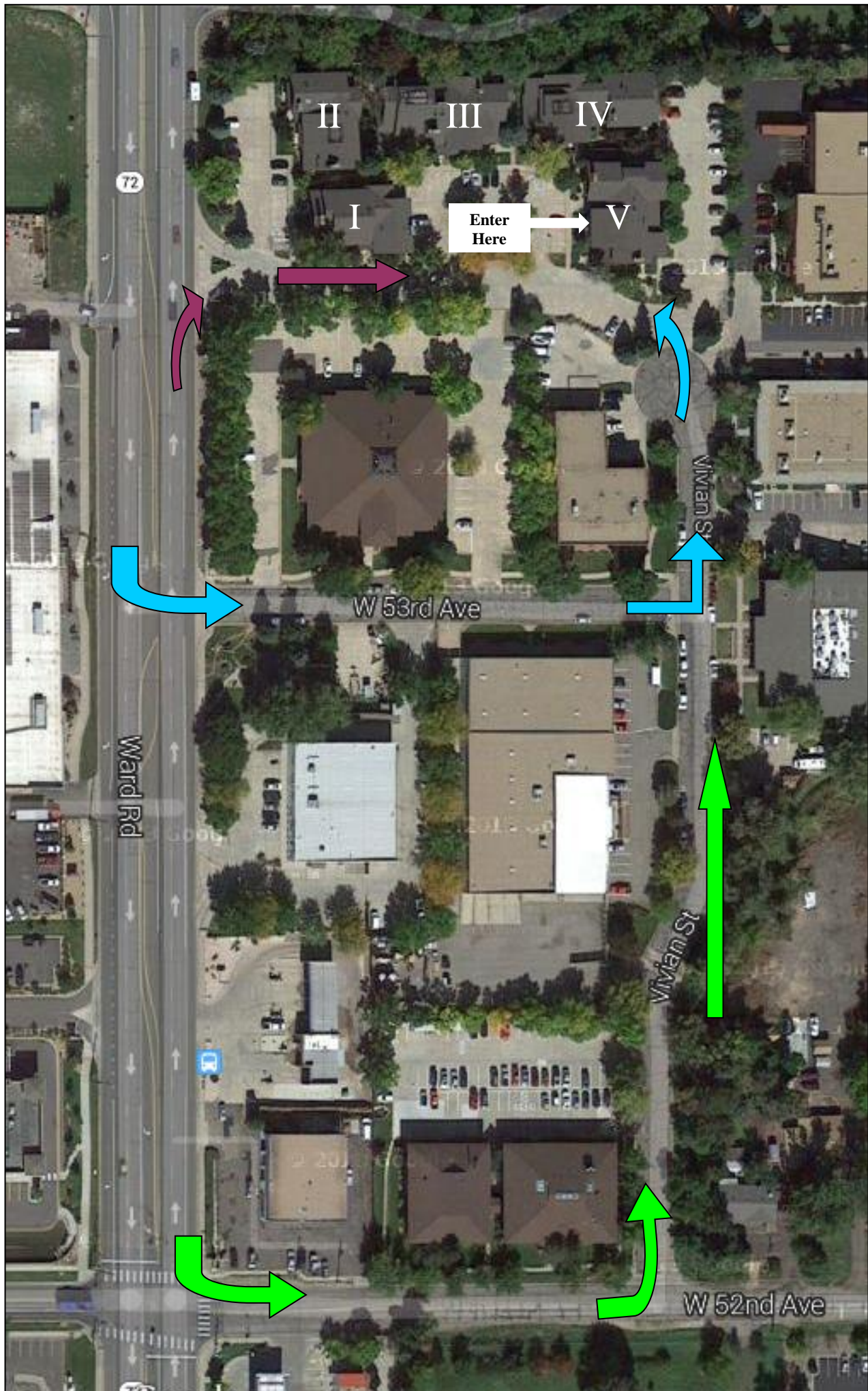
Turn left (eastbound) on 64th to Ward Road.

Turn right (south) on Ward Road to 52nd Avenue.

Turn left on 52nd (there is a stop light) and travel east 1 Block to Vivian Street.

Turn left on Vivian and travel northbound 1 ½ blocks where Vivian dead ends.

Veering slightly to the left, the dead end leads to the parking lot of the Aspen Business park office complex.



We recommend that you bring this map with you to your appointment.